



Design By Italy

*My Wall
My All*



EUROPEAN
PRODUCT

RESTA

*Private collection will change the
atmosphere of your living spaces!*



2445

2449

2452



2278

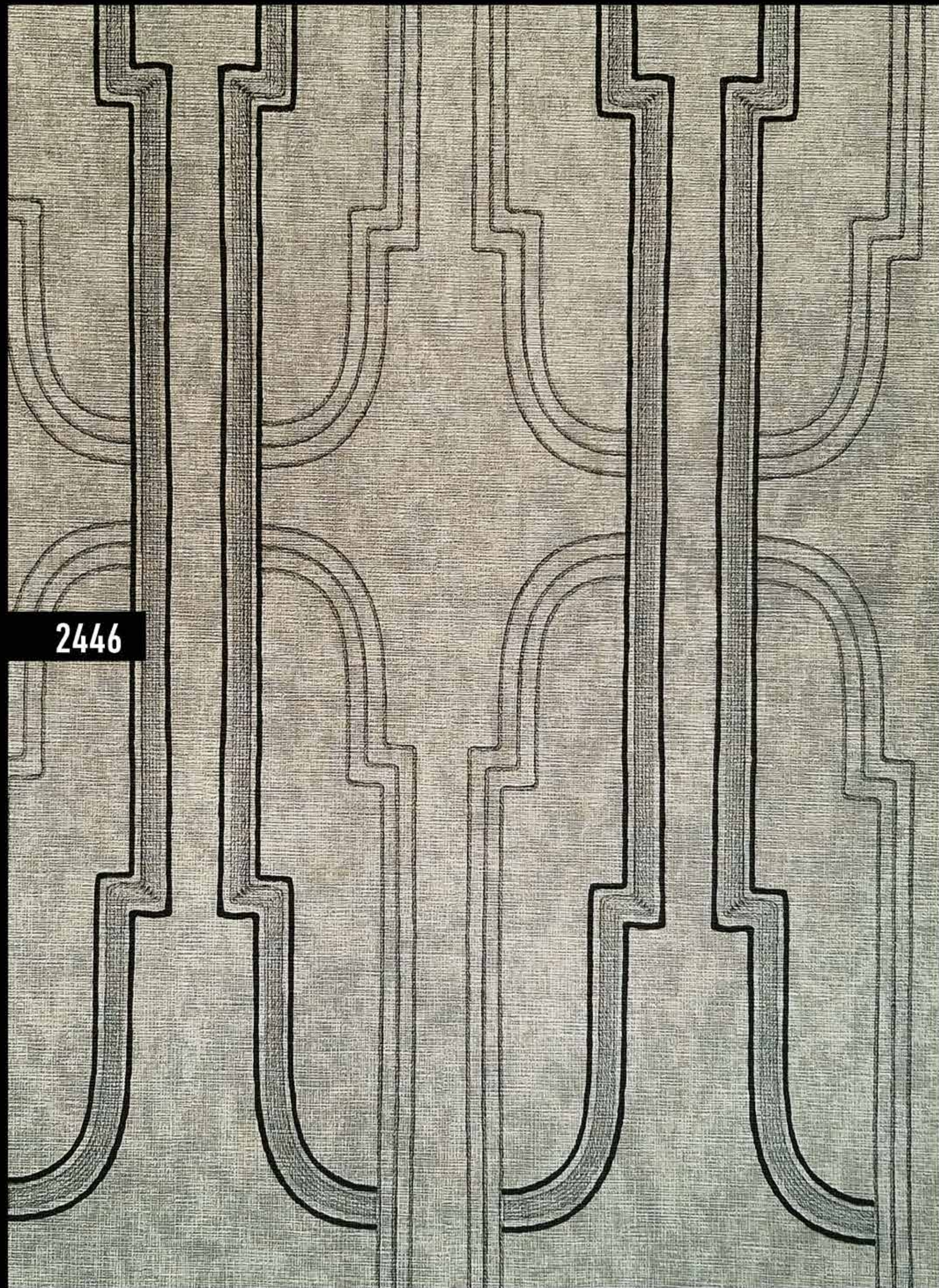
2447

A close-up view of a fabric sample with a fine, woven texture. The base color is a muted grey. It features three vertical stripes: a thin orange stripe on the left, a wider white stripe in the center, and another thin orange stripe on the right. The stripes are evenly spaced and run the full height of the sample.

2454

A close-up view of a fabric sample with a fine, woven texture. The color is a uniform, slightly darker grey than the first sample, with a consistent, subtle pattern throughout.

2451



2446



2453

2450





2464



2465



2470



2471





2473



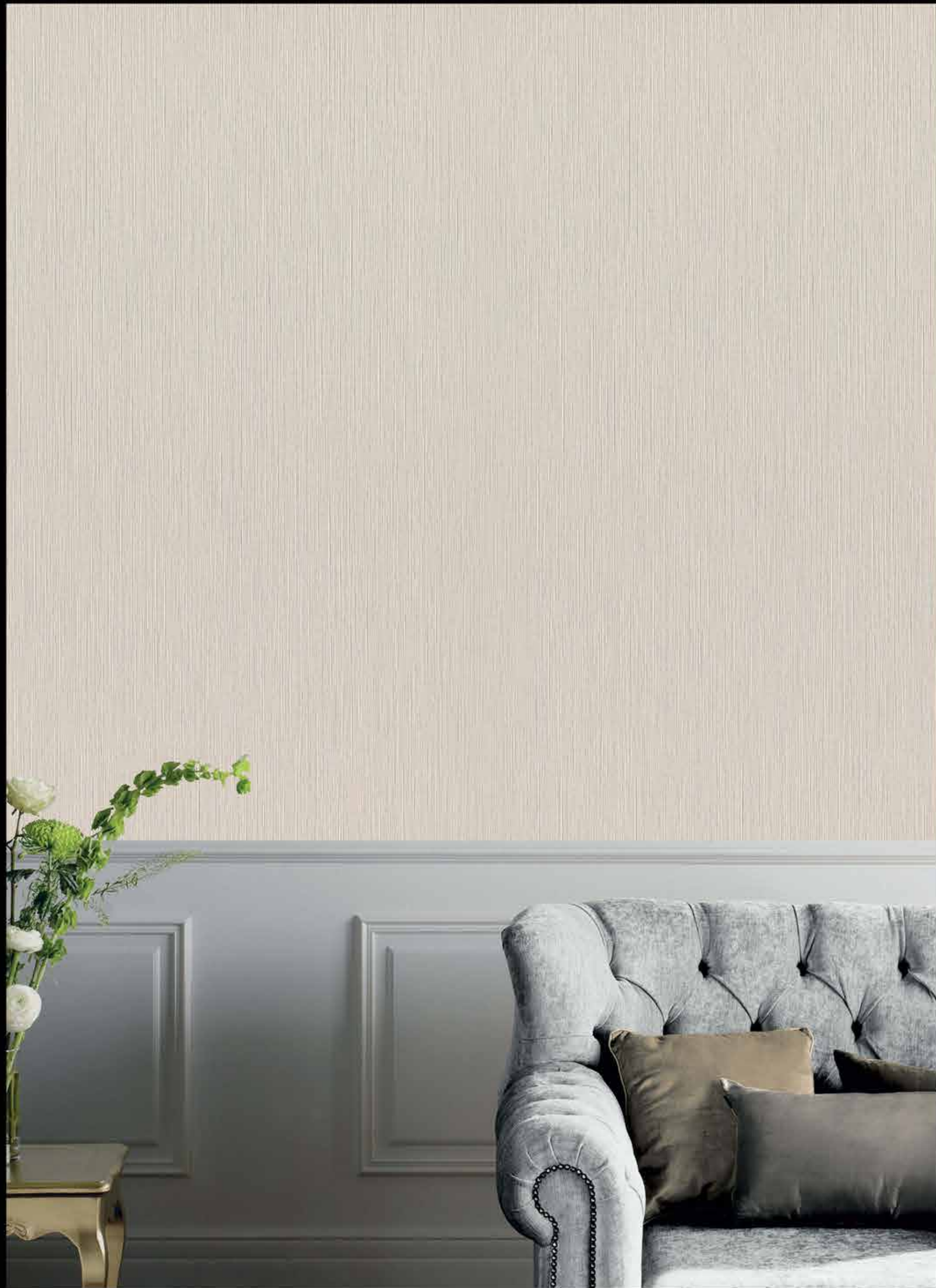
2468



2469



2472



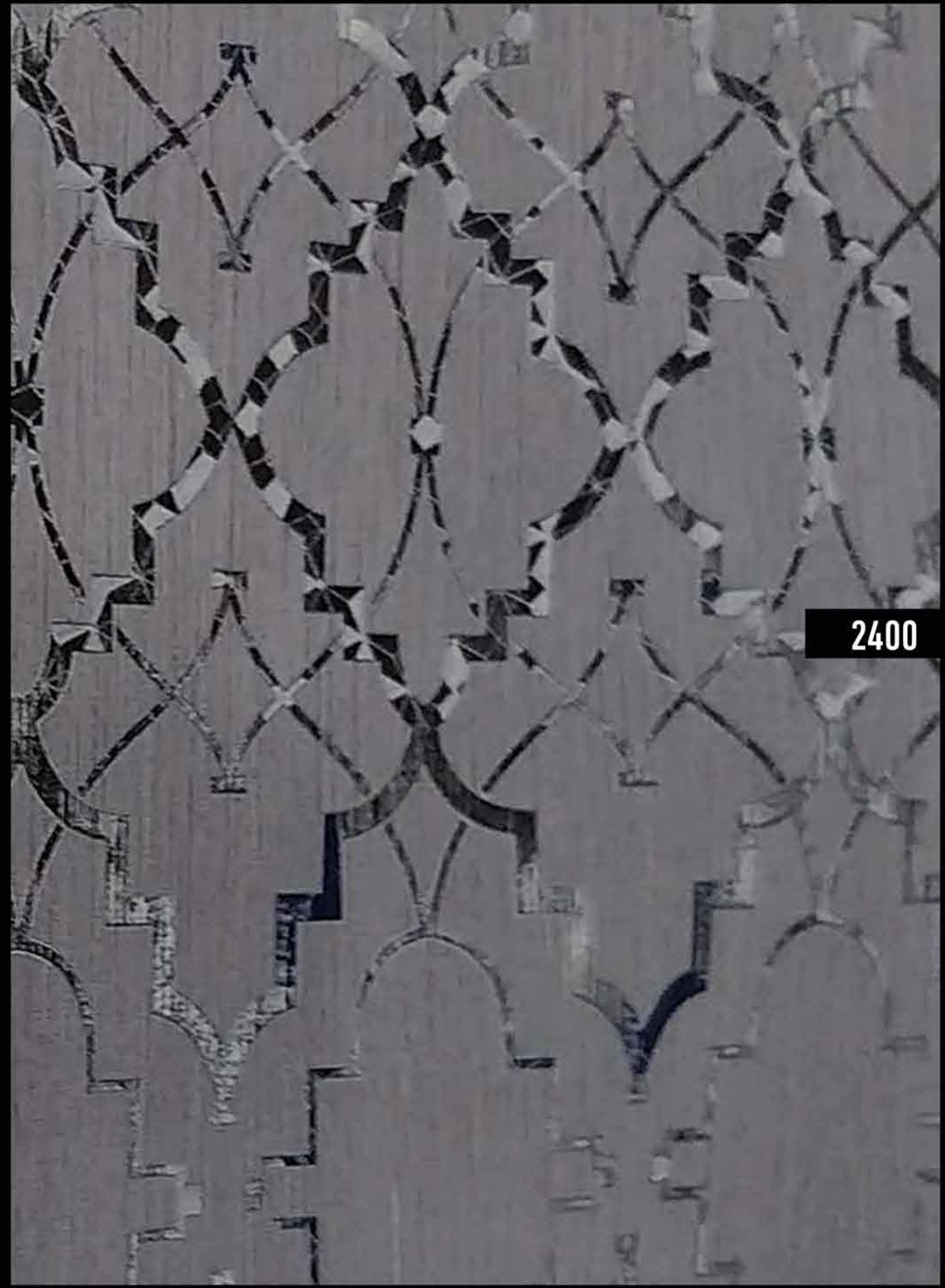
2409

2400



2408

2400



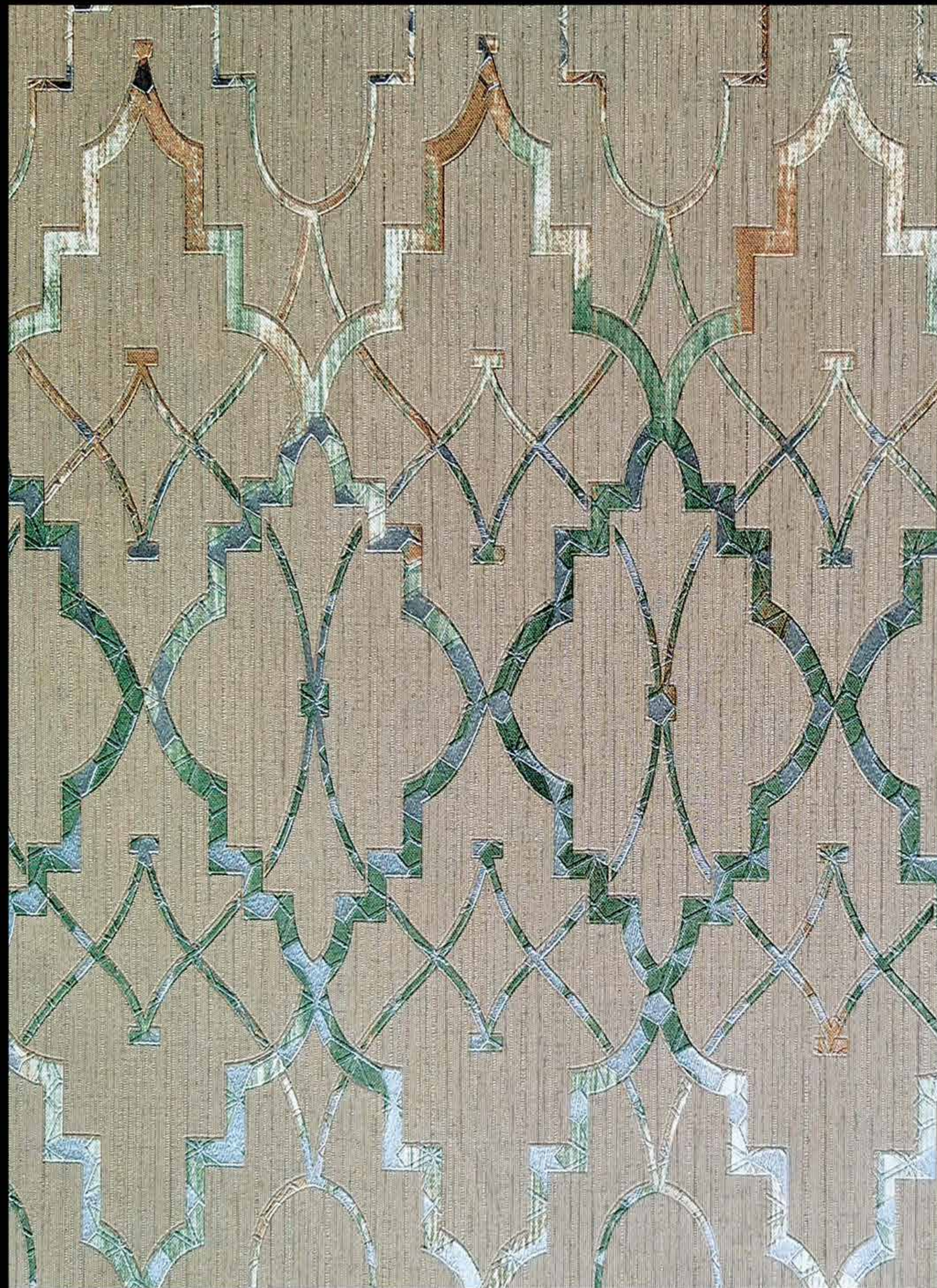
2269



2402



2407

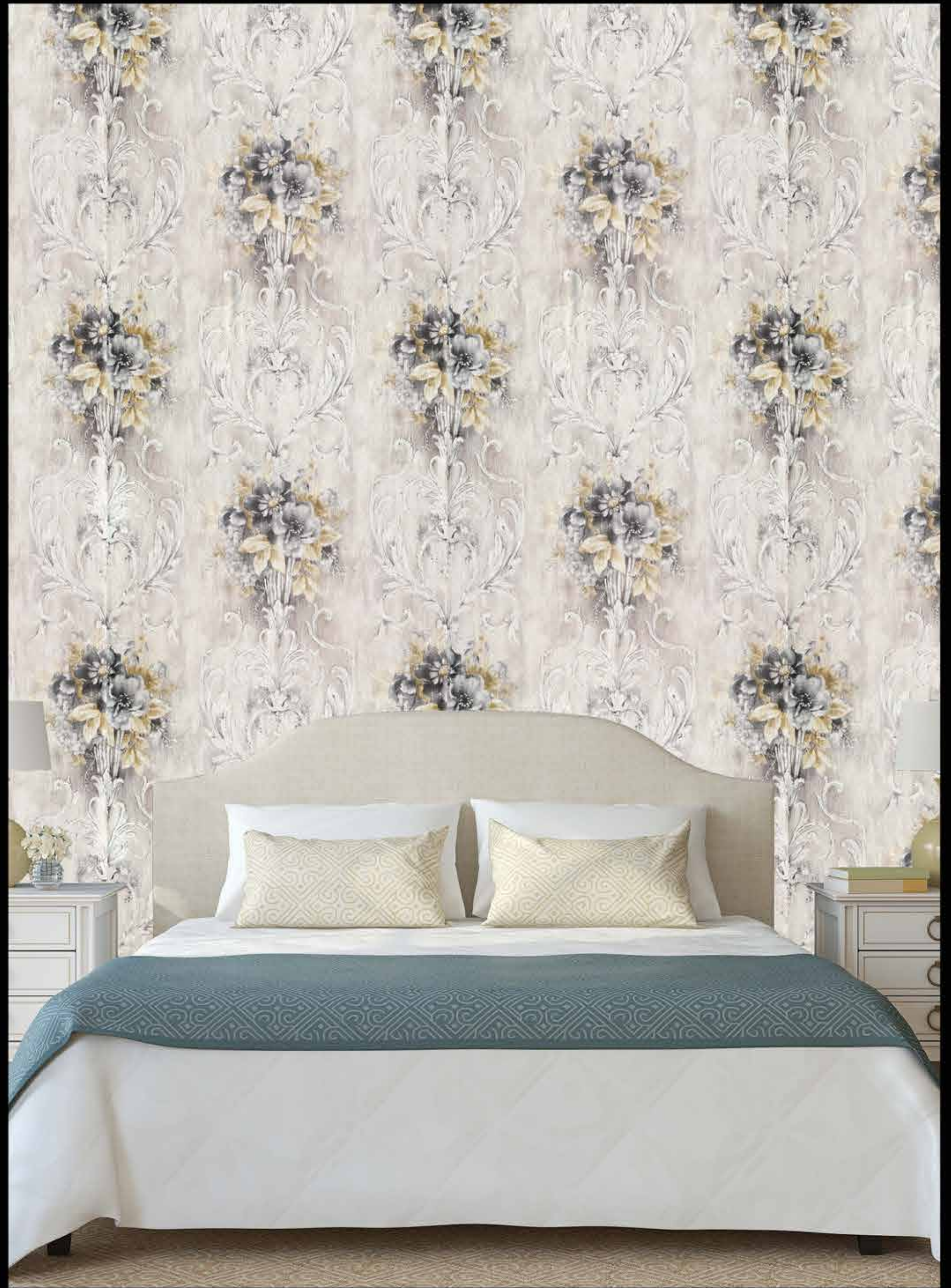


2407



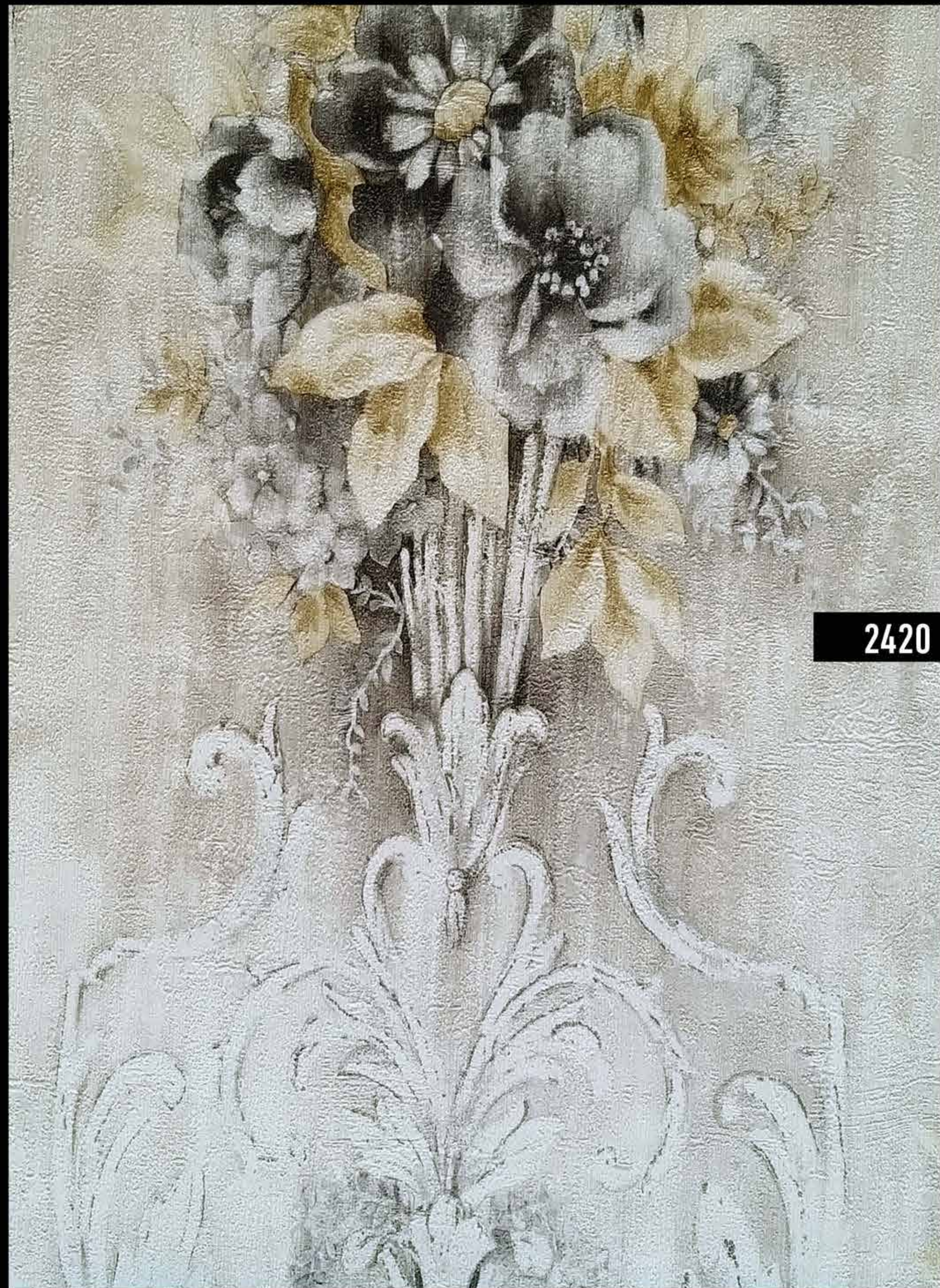
2403



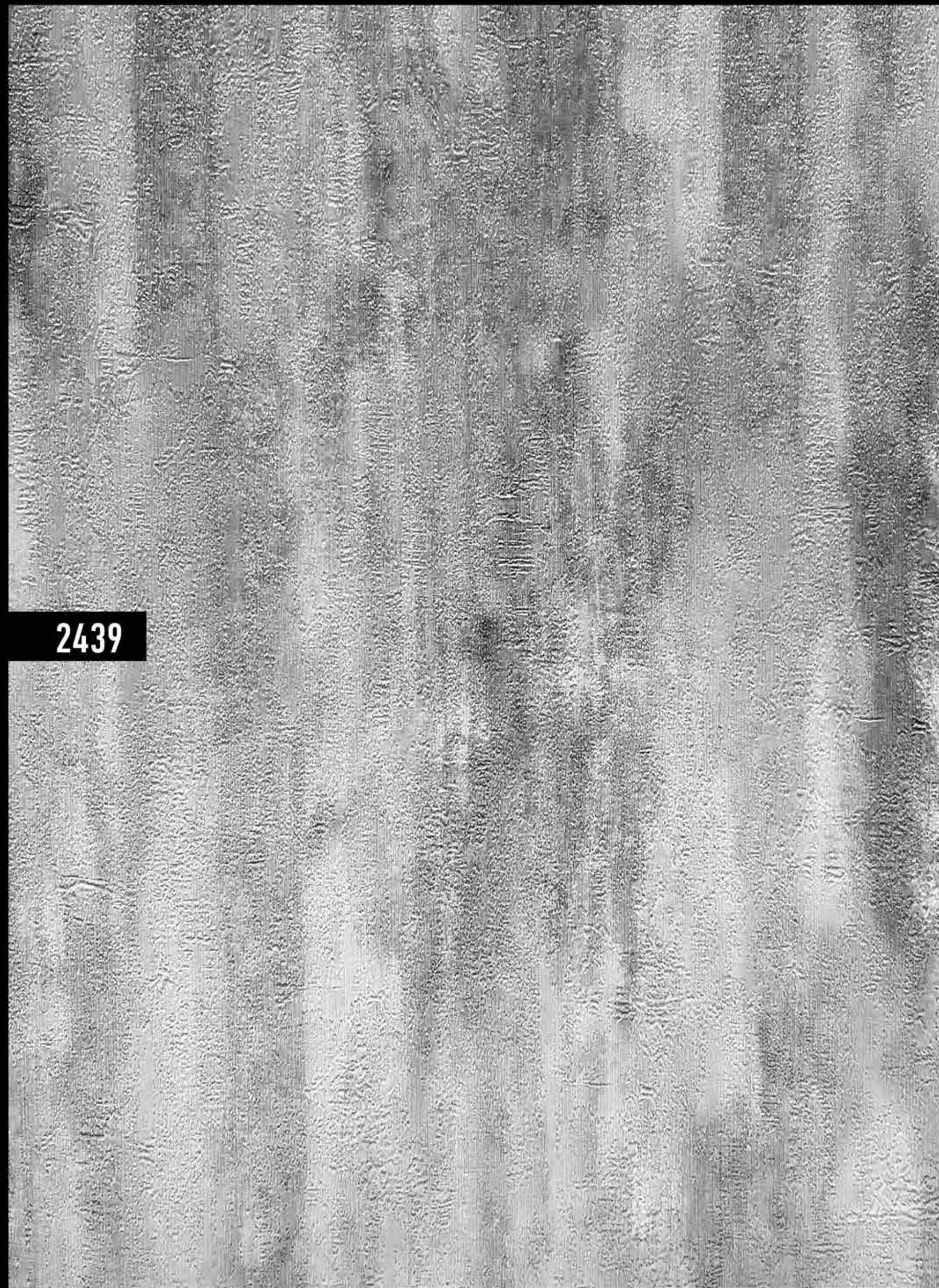




2437



2420



2439



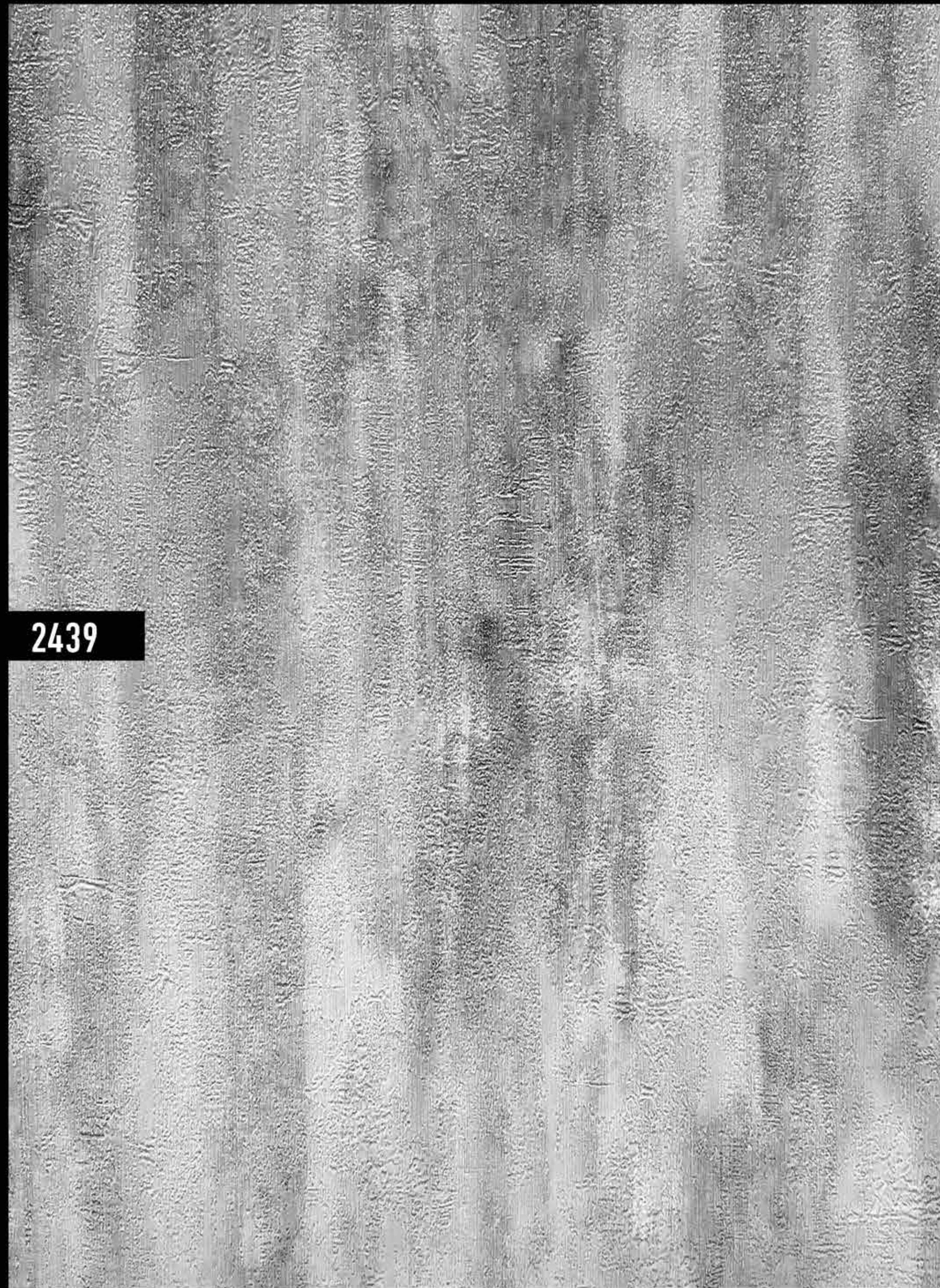
2419



2440



2419



2439

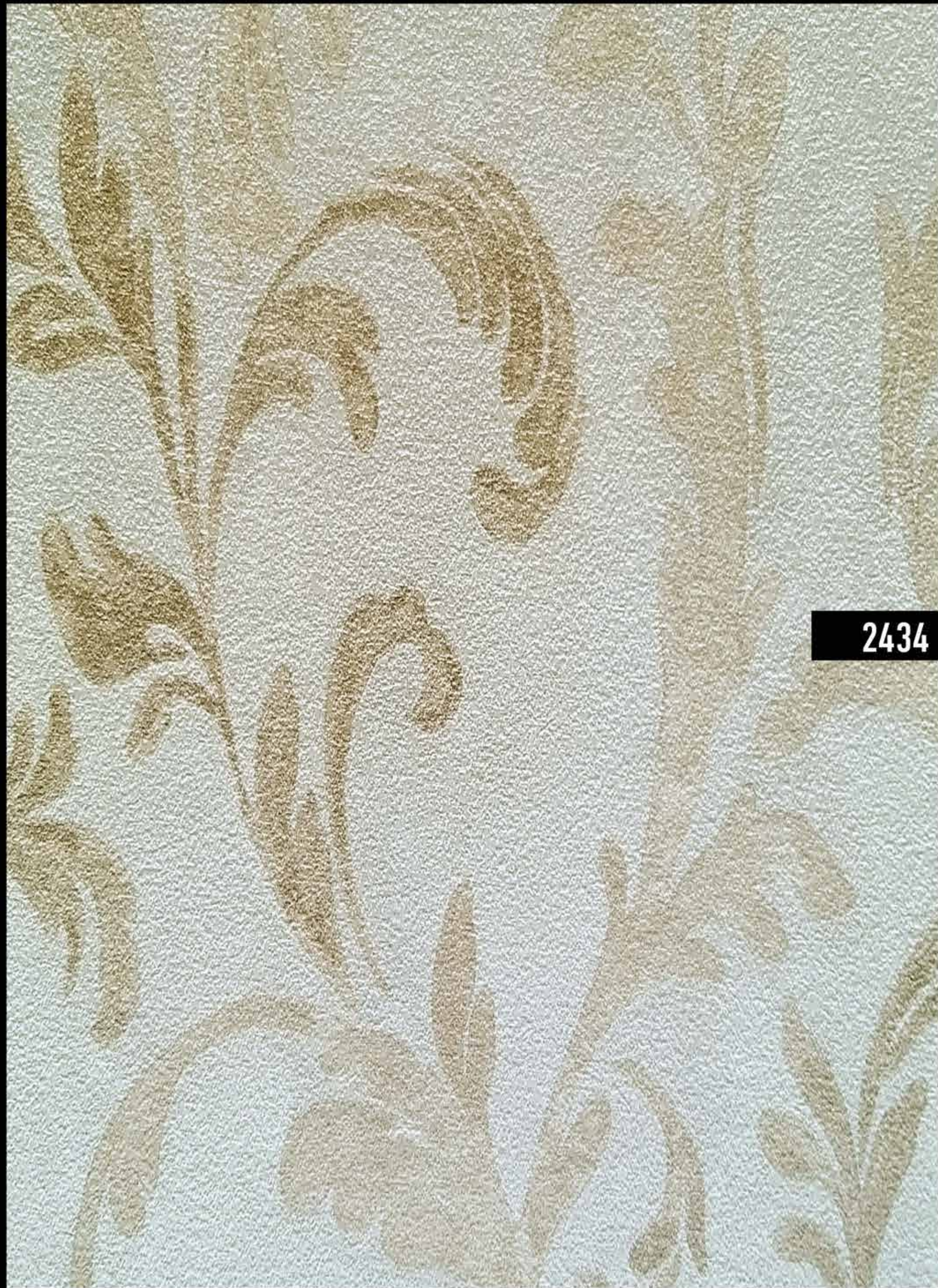


2417

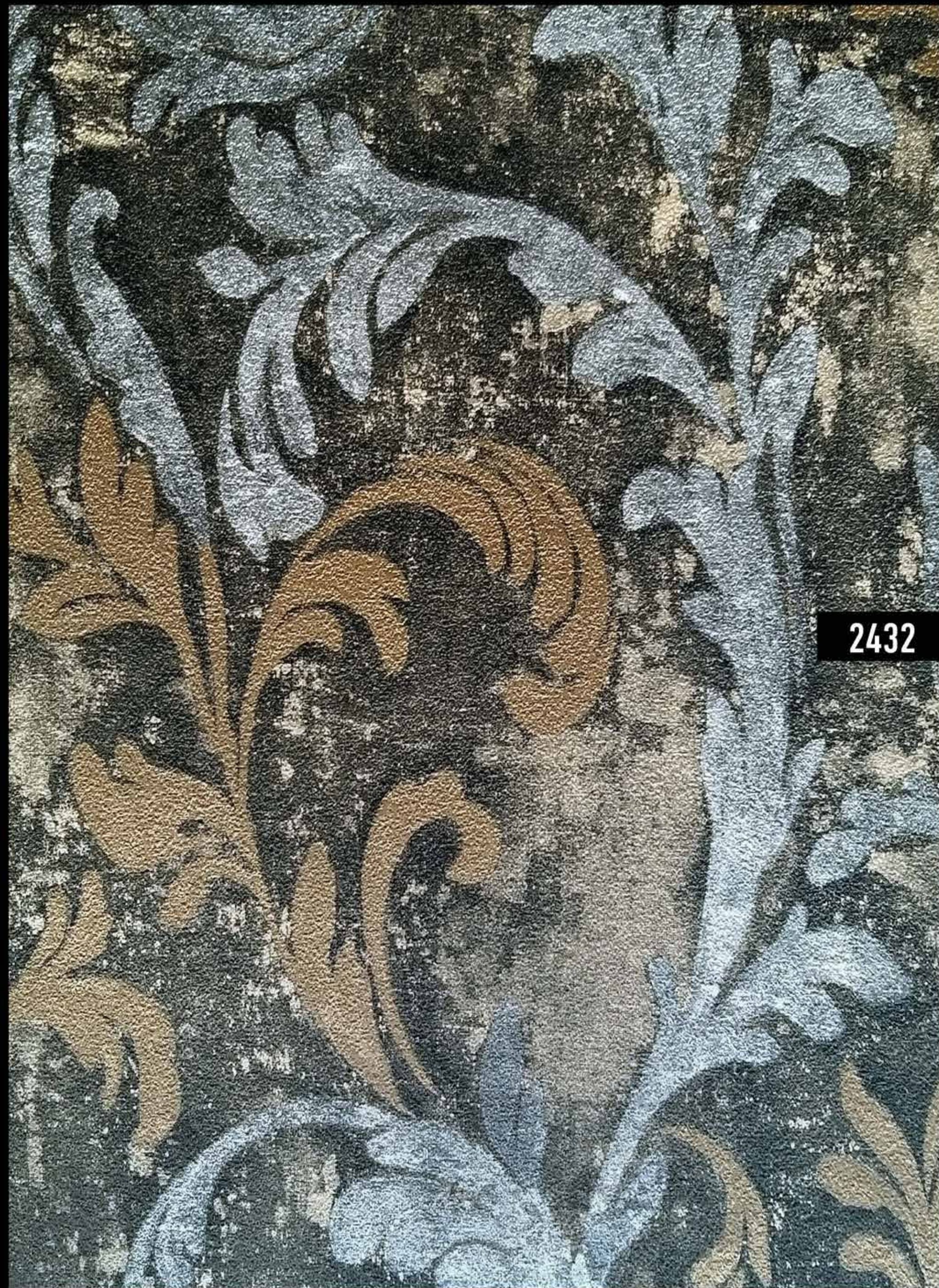




2424



2434



A dark, heavily textured surface, possibly a fabric or paper, with a mottled appearance of black, grey, and white. The texture is grainy and uneven.

2422

A repeating floral pattern on a light beige background. The design features stylized, swirling branches in a muted blue-grey color, adorned with leaves and small flowers. Interspersed among these are golden-brown, curved, leaf-like motifs. The overall style is reminiscent of traditional damask or brocade patterns.

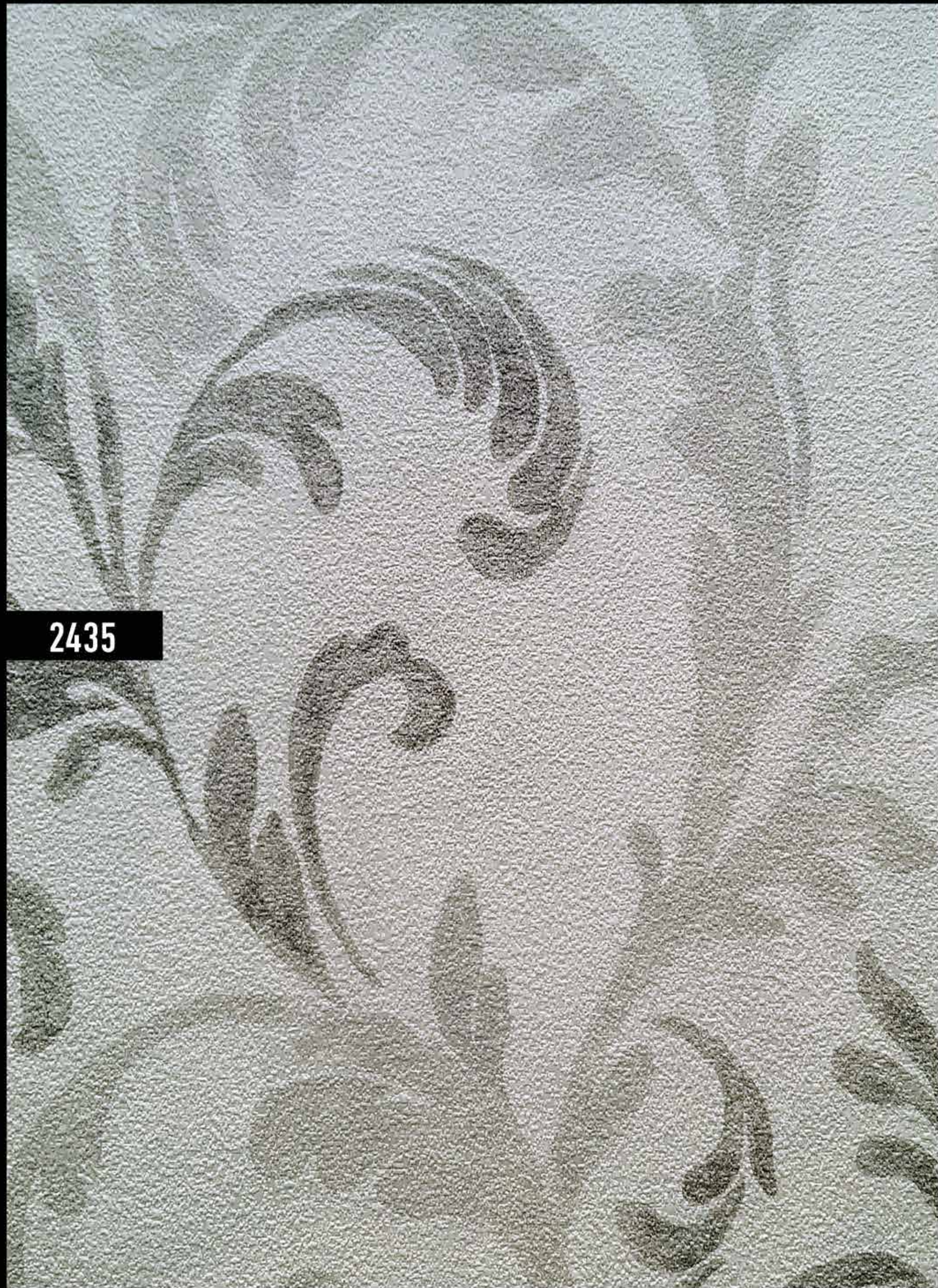
2433



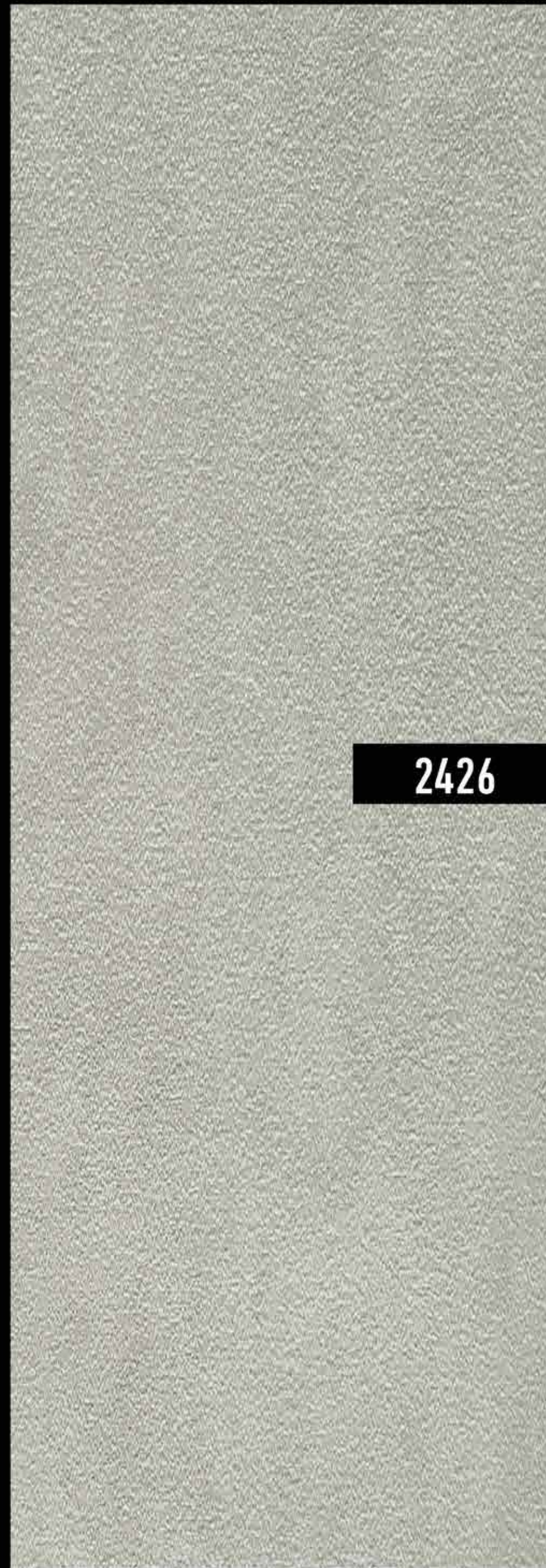
2421



2431



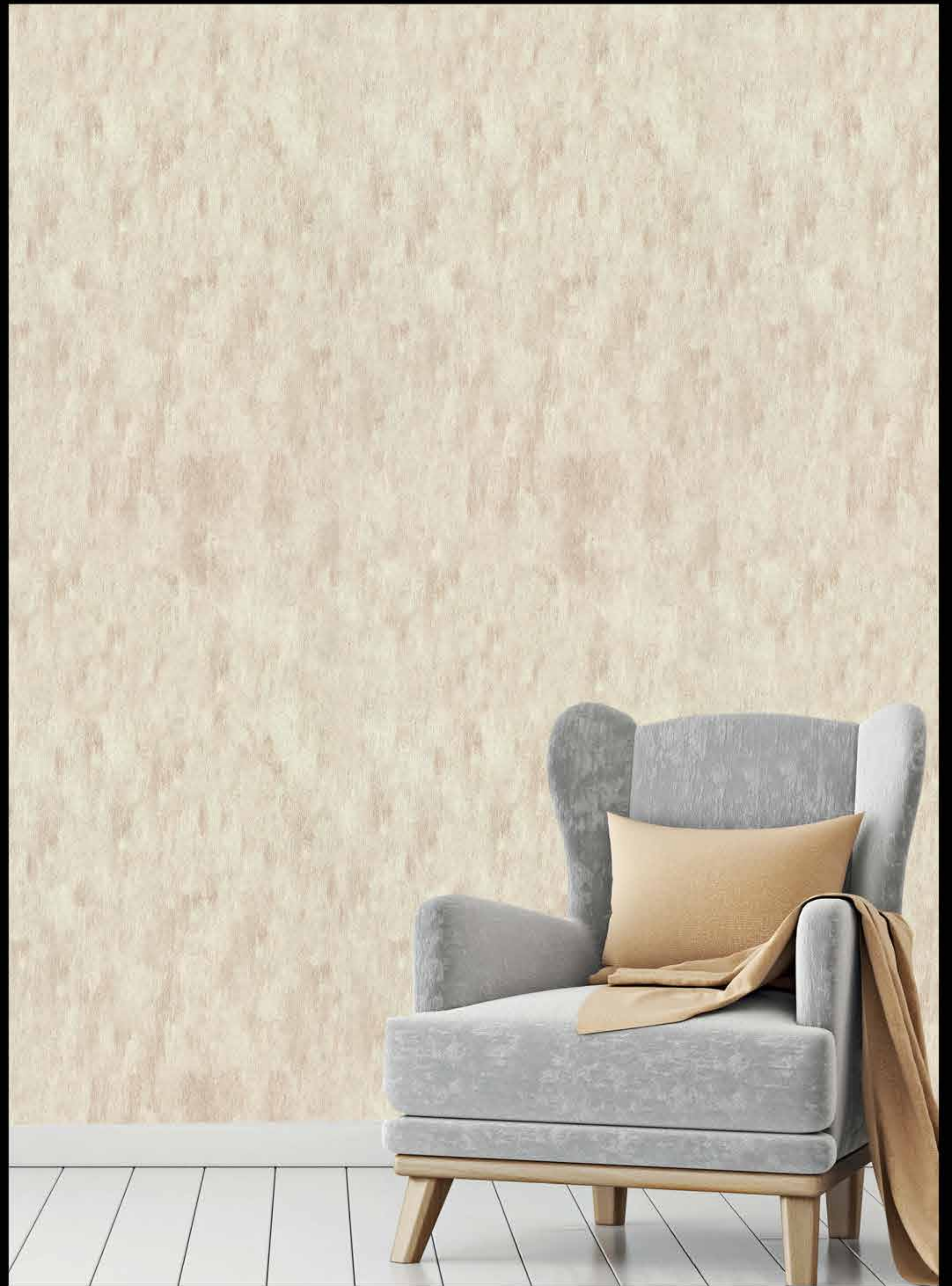
2435

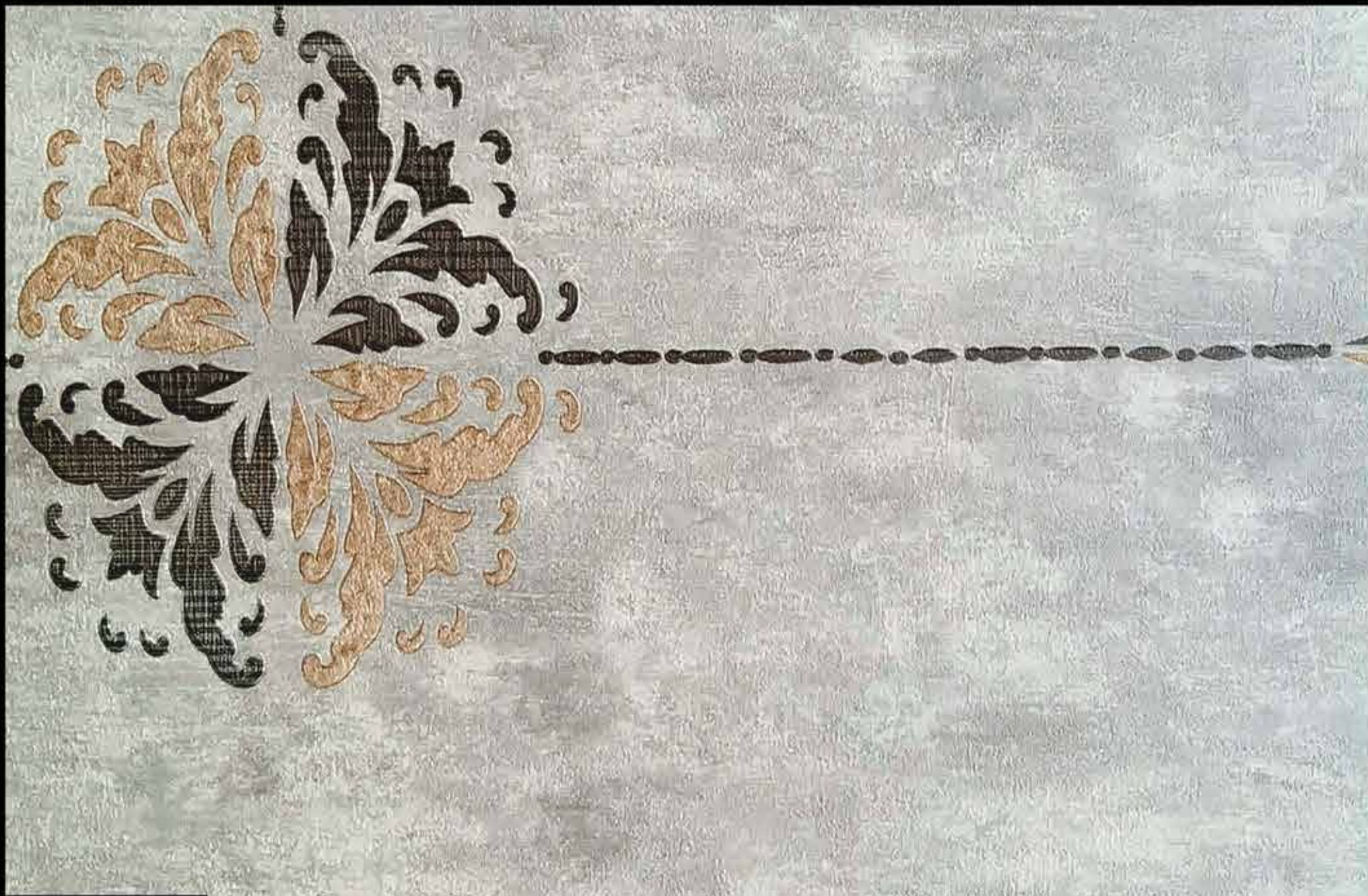


2426



2427



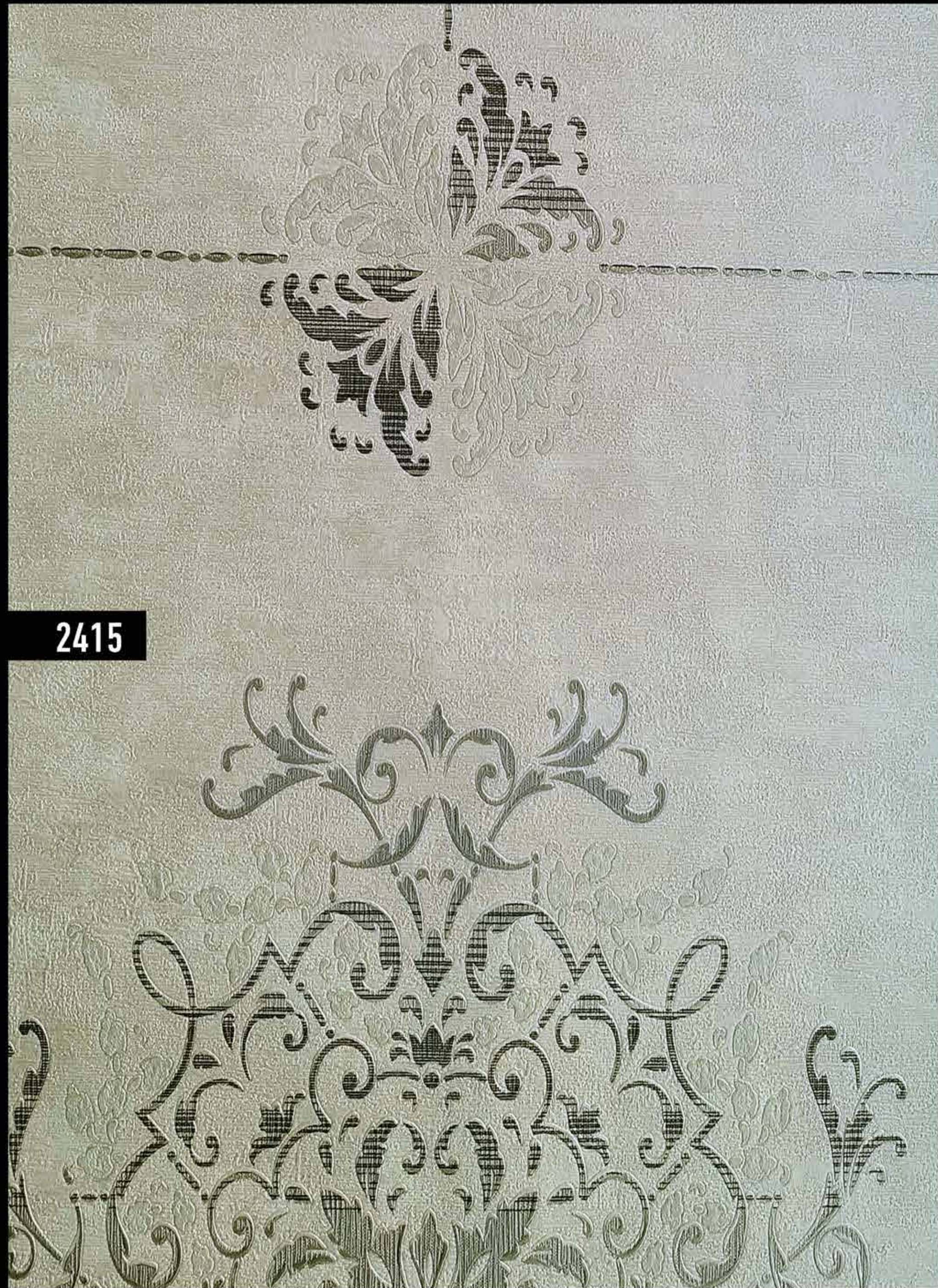


2412



2236





2415



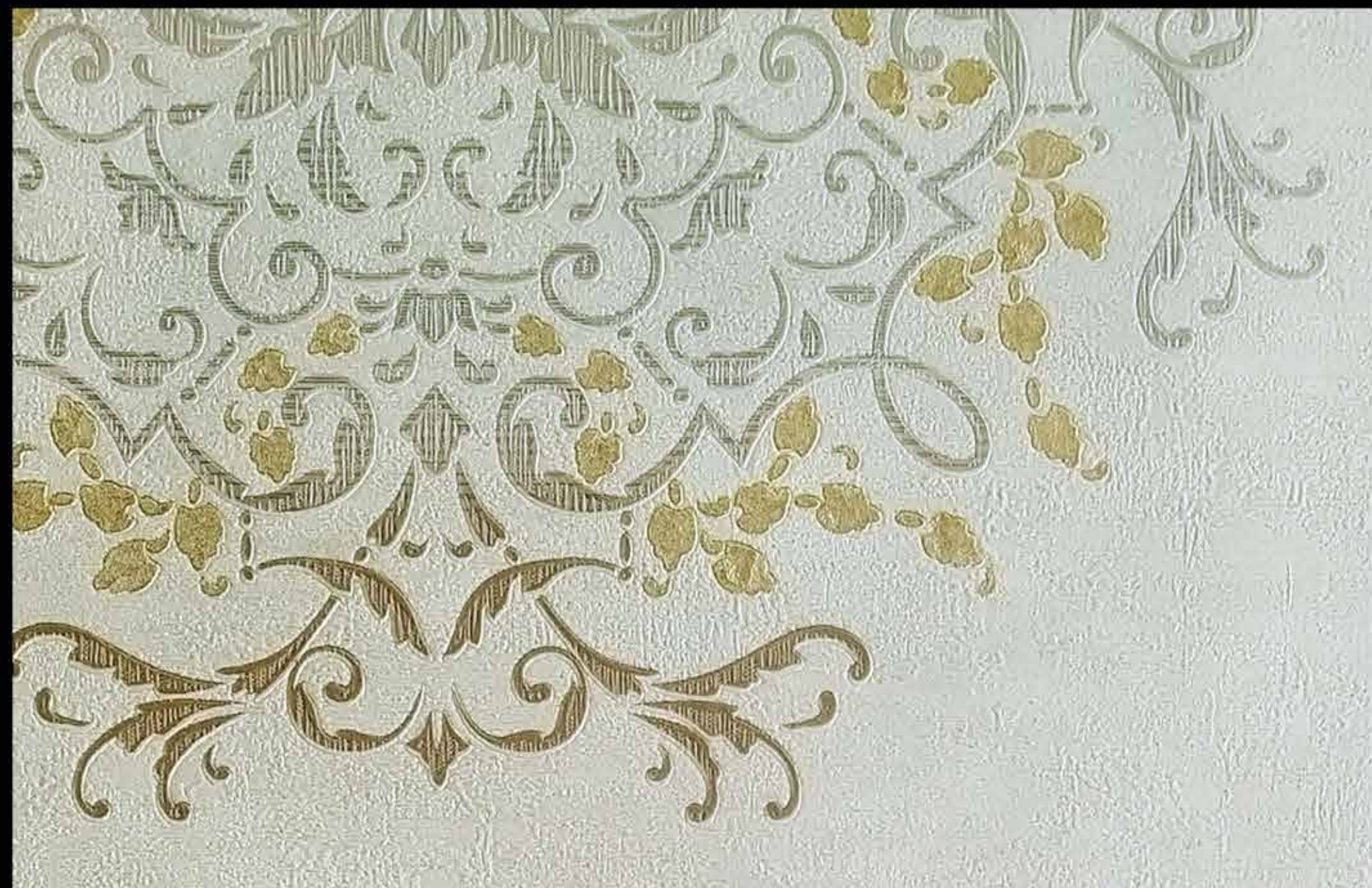
2233



2410



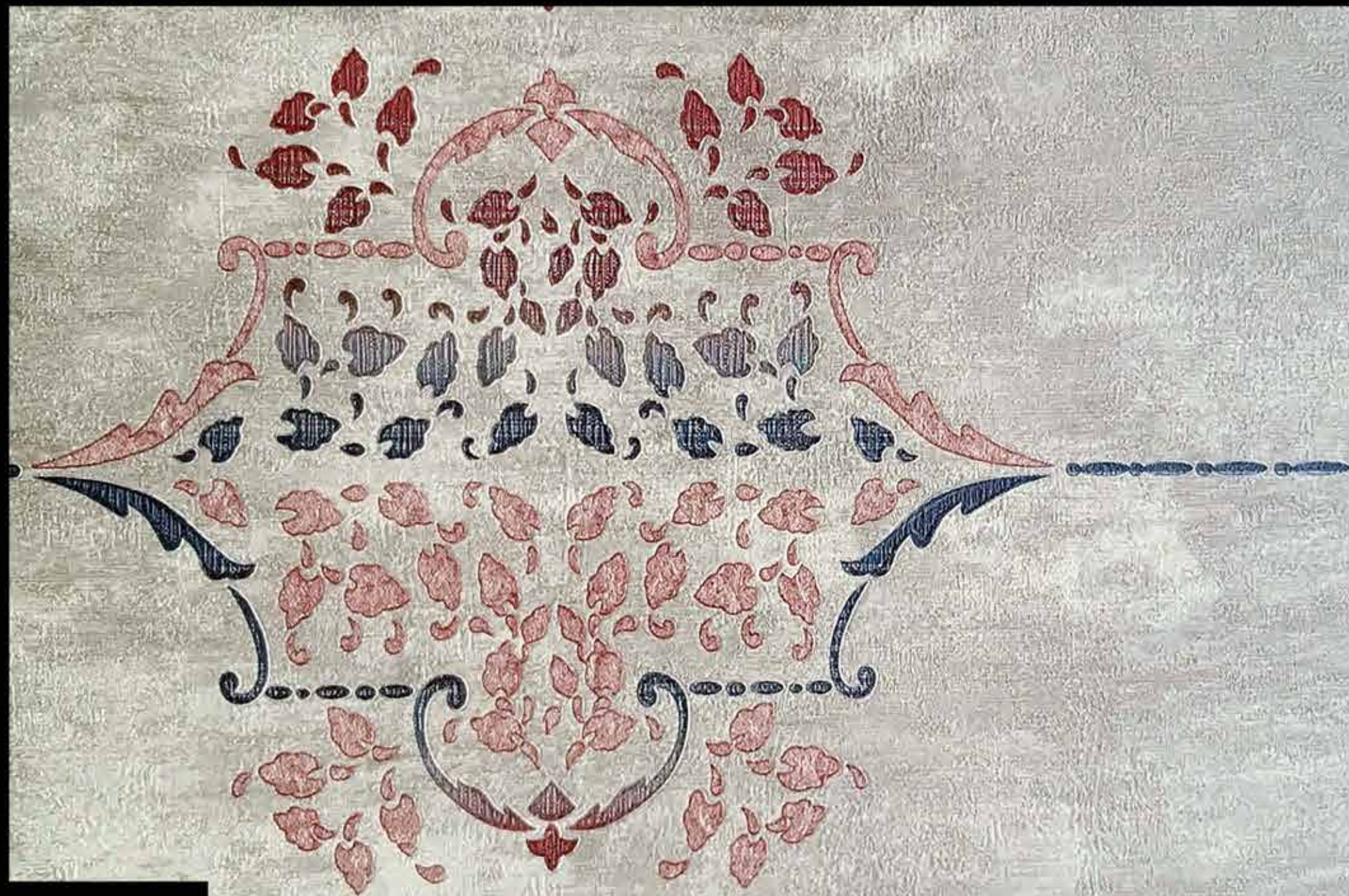
2235



2411



2233



2413



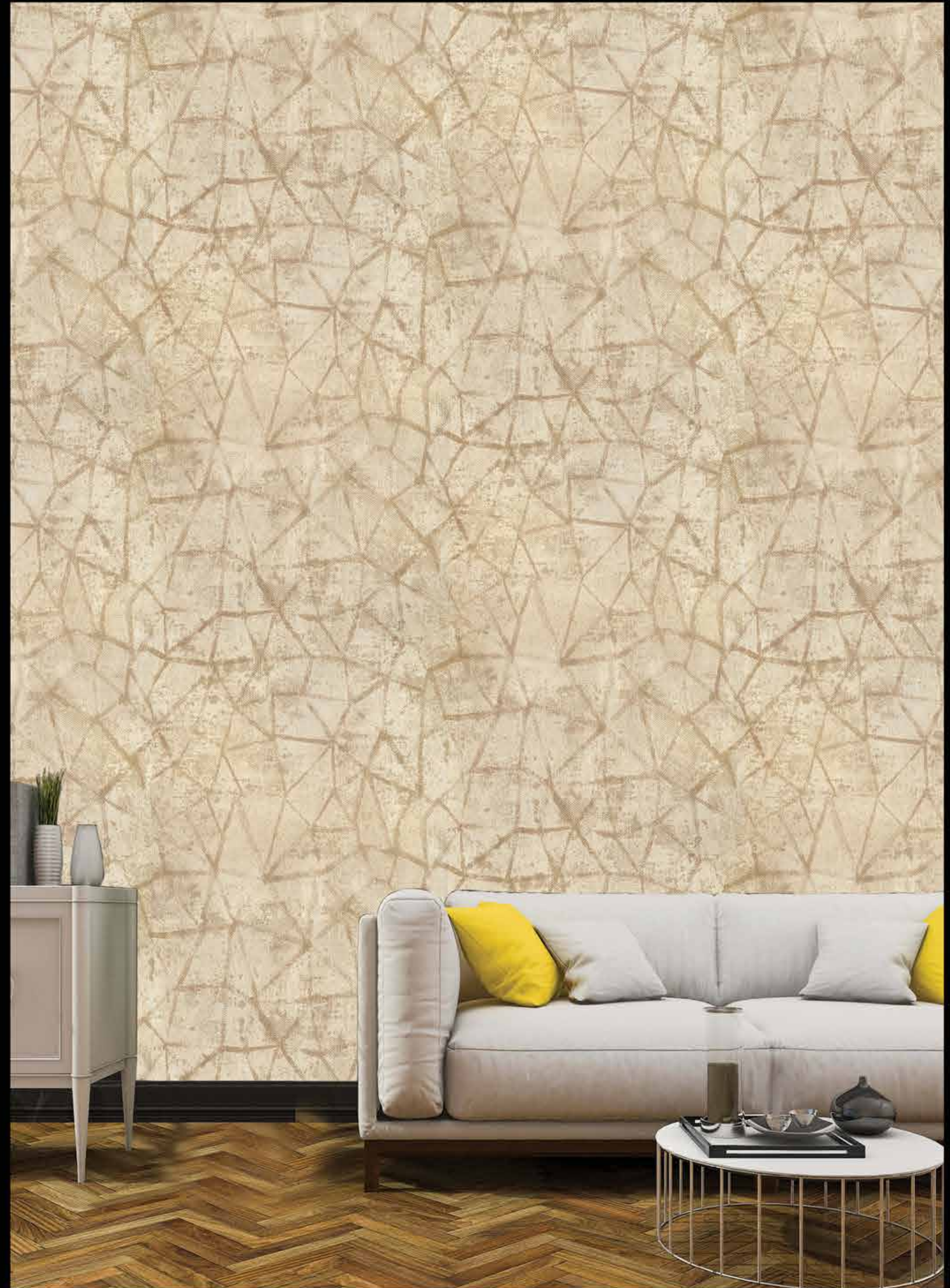
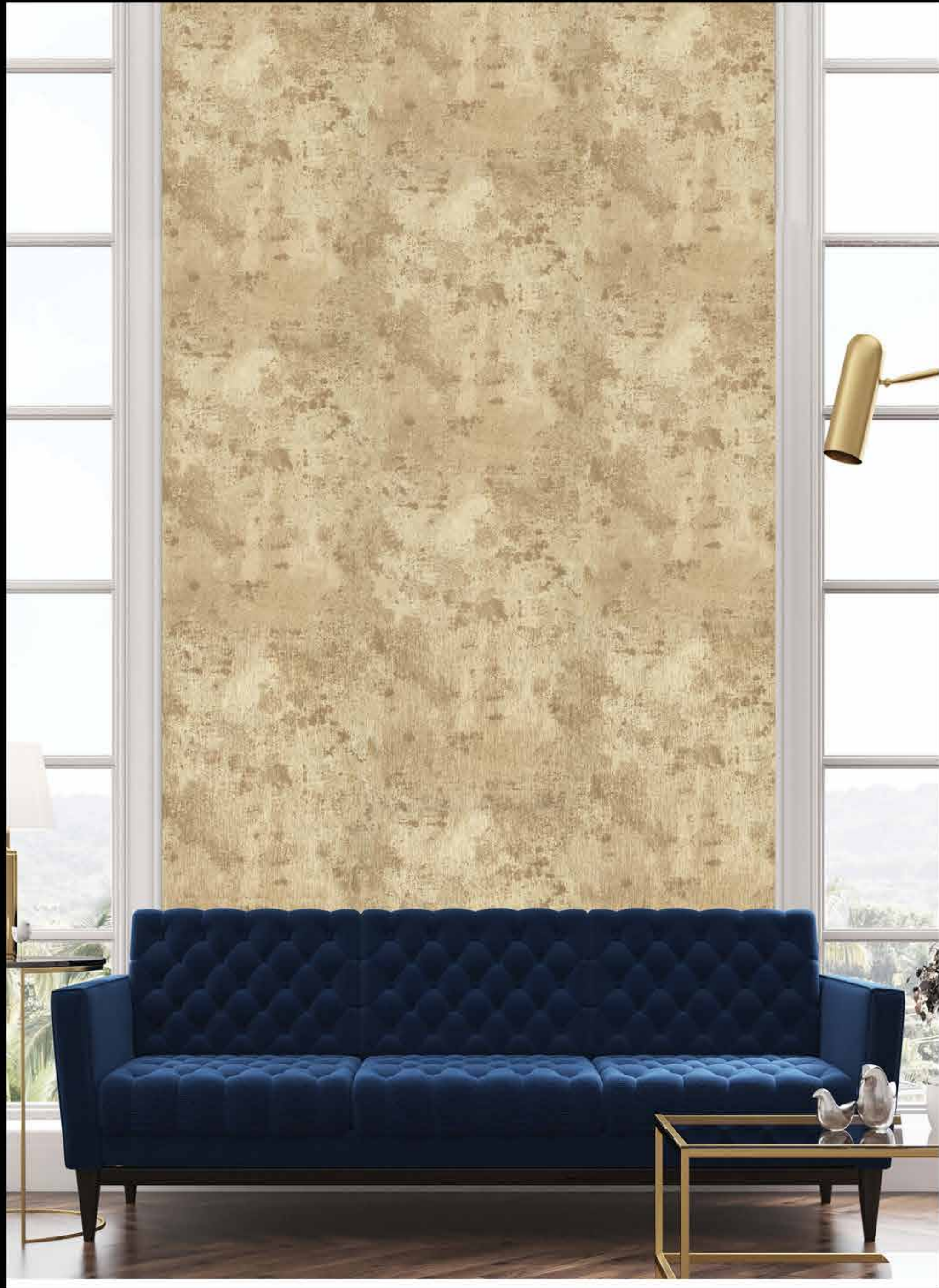
2236



2460



2236

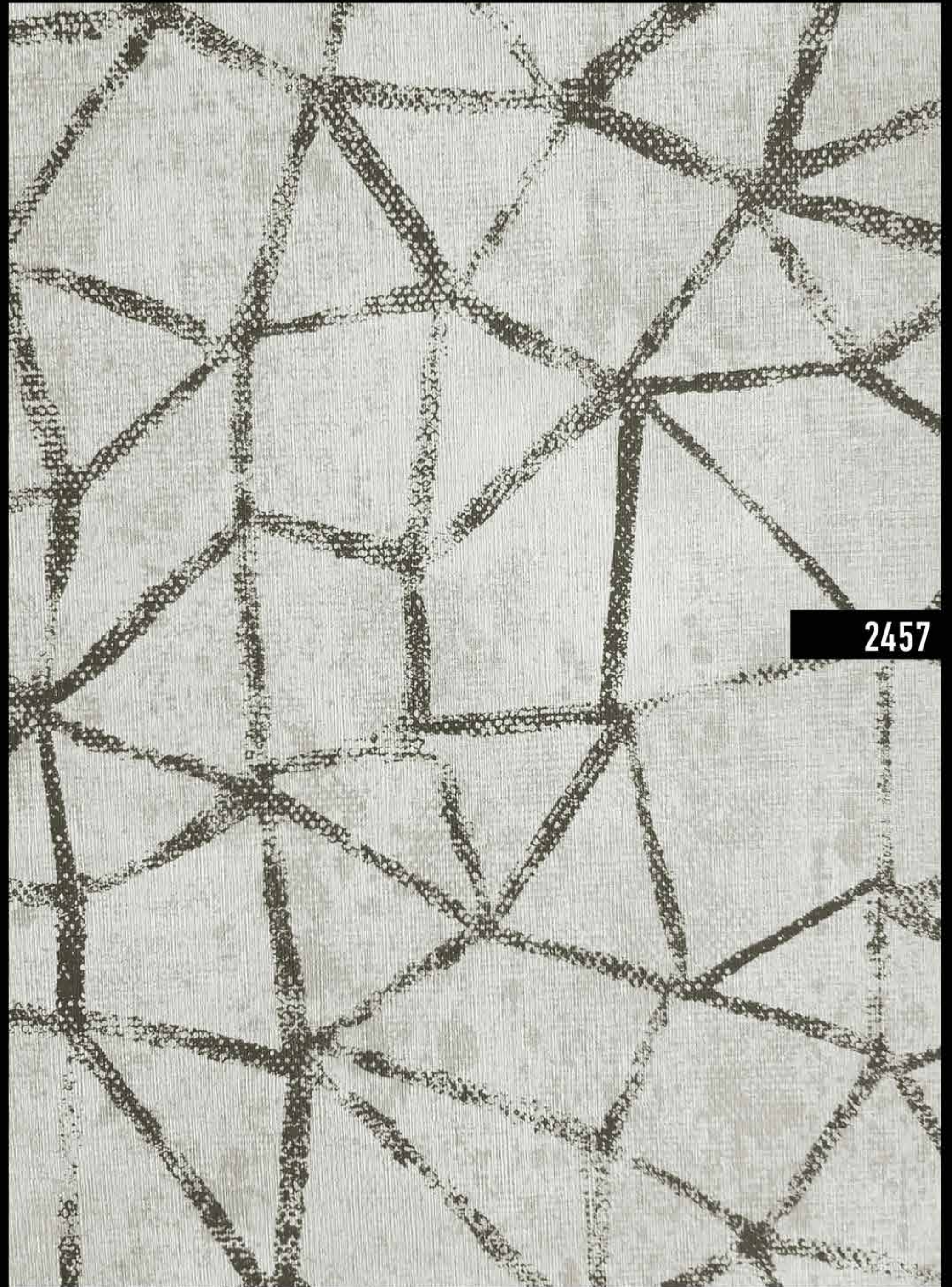




2463



2459





2460



2456



2462



2458





2442



2429



2444



2428



2441



2405



2443



2430

*My Wall
My All*

